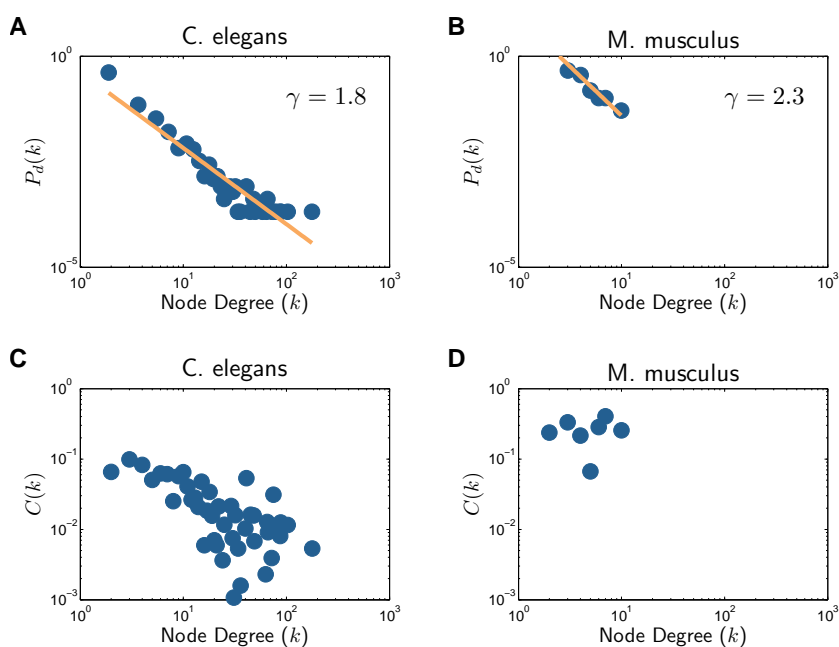


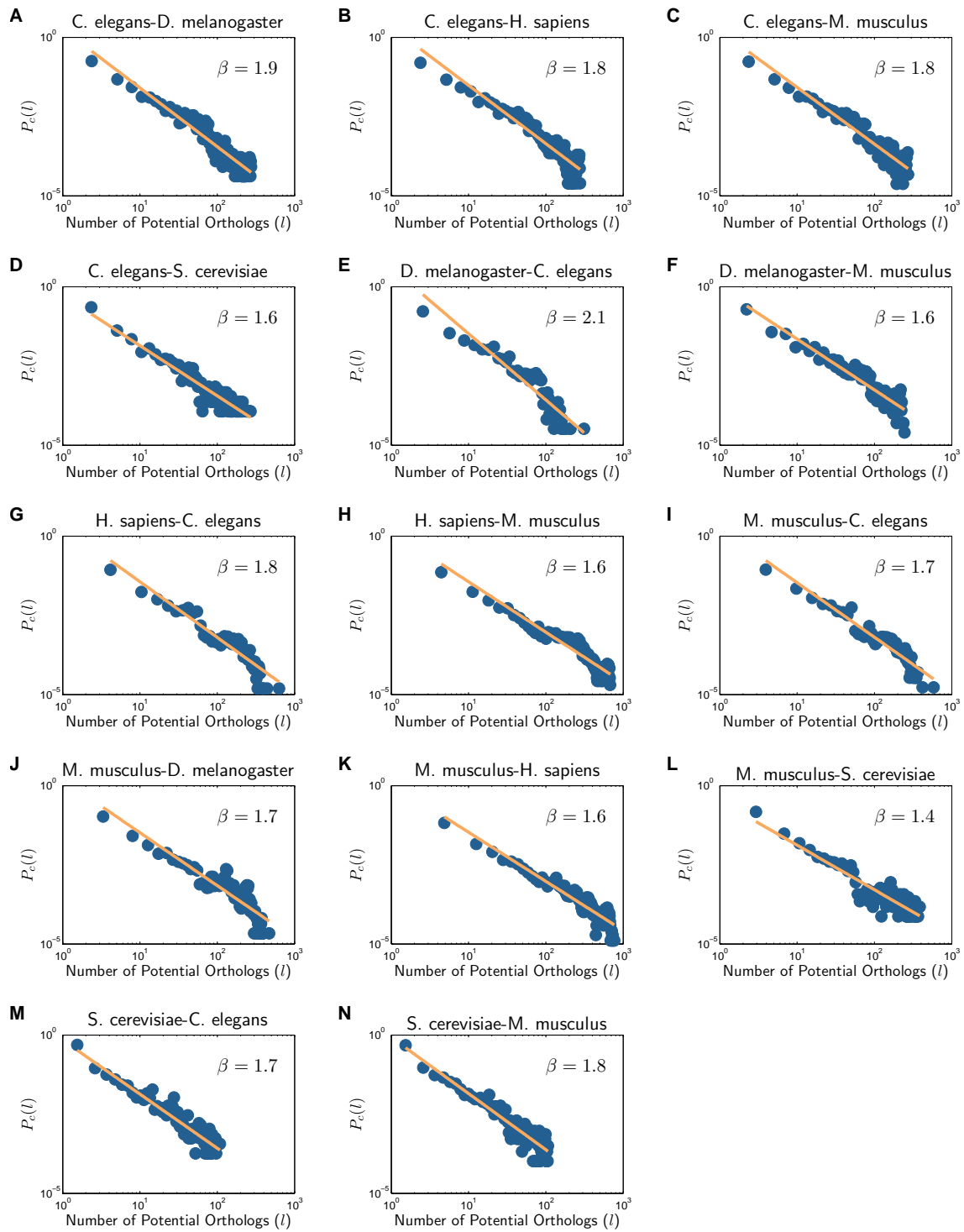
# Supplementary Material for “A Network Synthesis Model for Generating Protein Interaction Network Families”

Sayed Mohammad Ebrahim Sahraeian and Byung-Jun Yoon

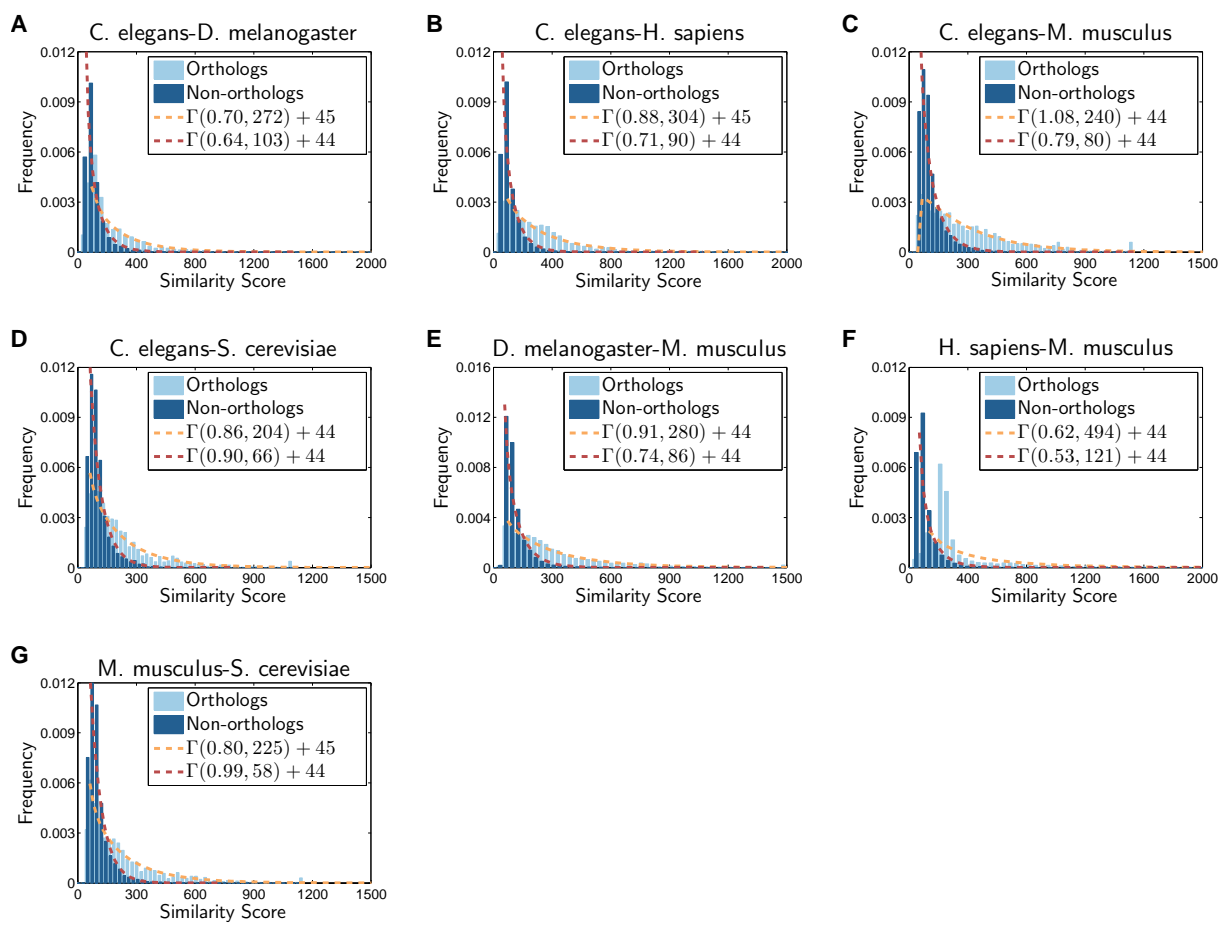
Department of Electrical and Computer Engineering, Texas A&M University, College  
Station, TX 77843, USA



**Figure S1: Network properties of different organisms.** (A), (B) show the degree distributions, and (C), (D) show the clustering coefficient profiles.



**Figure S2: Cross-species network properties for different pairs of organisms.** (A)-(N) show how the number of potential orthologs are distributed between a given pair of networks.



**Figure S3: Cross-species network properties for different pairs of organisms.** (A)-(G) illustrate the sequence similarity distribution for orthologous and non-orthologous node pairs.